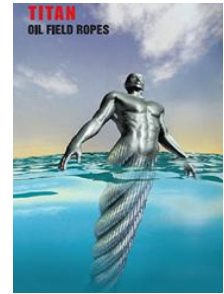


TITAN ANCHOR MOORING PENNANT ROPES



CONSTRUCTION	
ROPE	STRAND LAID
6x36SW	14-(7+7)-7-1
6x41SW	16-(8+8)-8-1
6x49SWS	16-(8+8)-8-8-1
6x52 (46)SW	18-(9+9)-9/6-1
6x61	20-(10+10)-10-5F-5-1
8x52SW	18-(9+9)-9/6-1
8X61	20-(10+10)-10-5F-5-1

NOMINAL ROPE DIAMETER	
Inches	Millimetres
2 to 3-1/4	52 to 83
2 to 3-3/8	52 to 87
2-3/8 to 3-1/4	60 to 83
3-3/8 to 4-1/2	87 to 115
4-3/4 to 5	121 to 127
4-3/4 to 5-1/4	121 to 134
5-1/4 to 6	134 to 154

Nominal Rope Diameter		Approximate Mass				Minimum Breaking Force							
		lb/ft		kg/m		EEIPS		TITAN		SUPER TITAN		TITAN MAX	
in.	mm	air	submerged	air	submerged	MT	kN	MT	kN	MT	kN	MT	kN
6 Strand Rope													
2	52	7.53	6.35	11.2	9.45	197	1930	208	2040	227	2222		
2 1/4	54	8.54	7.19	12.7	10.7	220	2160	234	2295	254	2492		
2 1/2	58	9.54	8.06	14.2	12	247	2420	259	2540	282	2761		
2 3/4	60	10.6	8.87	15.7	13.2	274	2690	287	2814	312	3063		
2 1/2	64	11.8	9.95	17.5	14.8	301	2950	316	3099	343	3365		
2 3/4	67	13	11	19.3	16.3	330	3240	346	3393	376	3689		
2 3/4	71	14.2	12	21.2	17.9	360	3530	378	3707	410	4025		
2 3/4	74	15.6	13.2	23.2	19.6	392	3840	411	4030	447	4382		
3	77	17	14.3	25.3	21.3	424	4160	446	4373	484	4751	504	4940
3 1/8	80	18.4	15.5	27.4	23.1	458	4490	480	4707	522	5121	543	5320
3 1/4	83	19.9	16.8	29.6	25	493	4830	517	5070	562	5512	584	5730
3 3/8	87	21.5	18.1	32	27	528	5180	542	5315	602	5903	626	6138
3 1/2	90	23.1	19.5	34.4	29	563	5520	578	5668	642	6294	680	6665
3 3/4	92	24.7	20.8	36.8	31	598	5860	611	5991	679	6662	710	6967
3 3/4	96	26.5	22.4	39.5	33.3	639	6270	645	6325	717	7029	740	7255
4	103	29.8	25.1	44.4	37.4	647	6340	726	7119	806	7908		
4 1/8	105	31.9	26.9	47.4	40	683	6700	745	7305	828	8119		
4 1/4	108	33.7	28.4	50.2	42.3	725	7110	819	8031	910	8928		
4 1/2	115	37.8	31.9	56.2	47.4	806	7900	903	8855	1004	9845		
4 3/4	121	42.1	35.5	62.6	52.8	890	8730	995	9757	1105	10840		
5	127	46.6	39.3	69.4	58.5	978	9590	1101	10796	1224	12000		
8 Strand Rope													
4 3/4	121	43.1	36.4	64.1	54.1	995	9757	1105	10840				
5	127	47.7	40.3	71	59.9	1101	10796	1224	12000				
5 1/4	134	52.6	44.4	78.3	66	1238	12140						
5 1/2	140	57.7	48.7	85.9	72.4	1357	13310						
5 3/4	146	63.1	53.2	93.9	79.2	1485	14560						
6	154	68.5	57.8	102	86	1615	15840						

Note: The Wire Rope conforms to the applicable sections of API Specification 9A